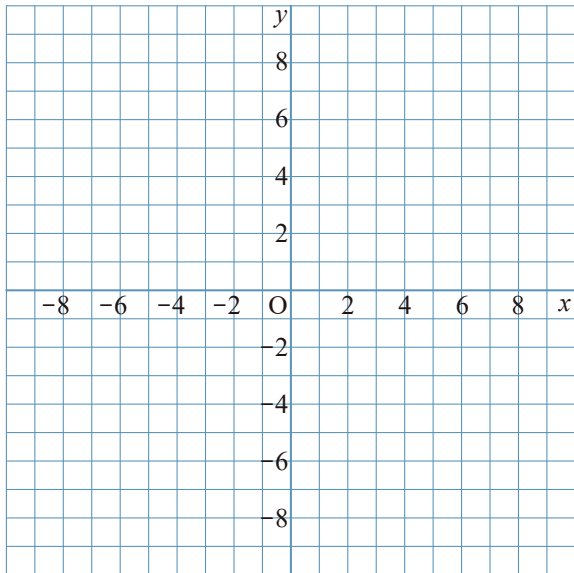
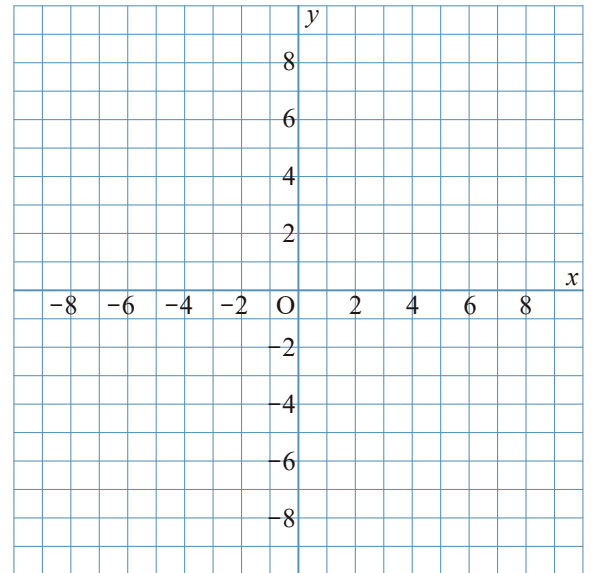


1 次のグラフをかきなさい。

① $y = \frac{6}{x}$

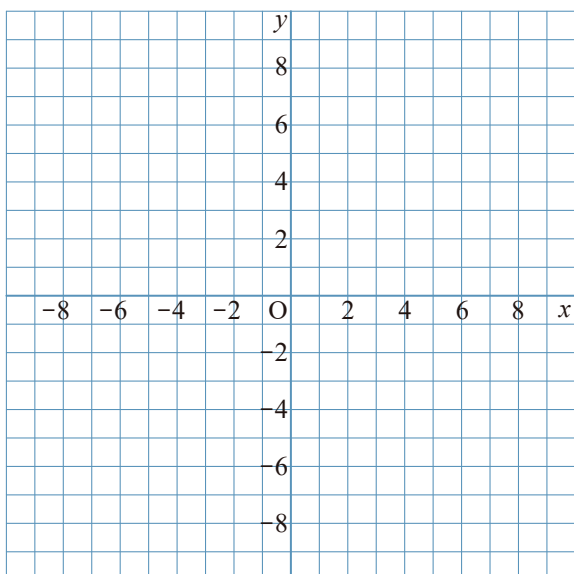


② $y = -\frac{6}{x}$

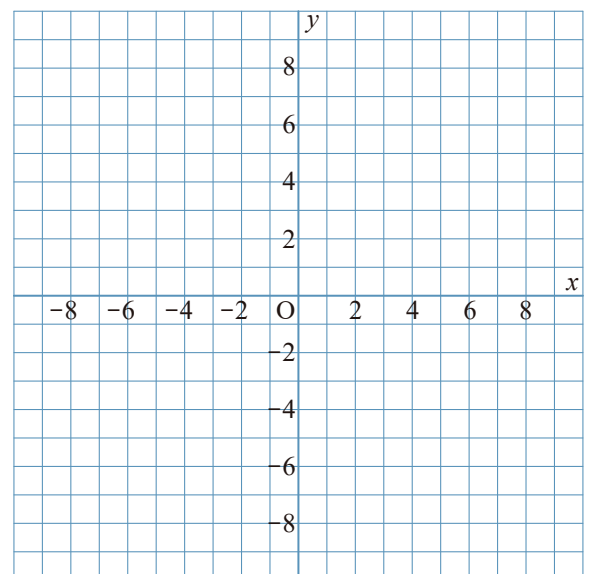


2 次のグラフをかきなさい。

① $y = \frac{9}{x}$

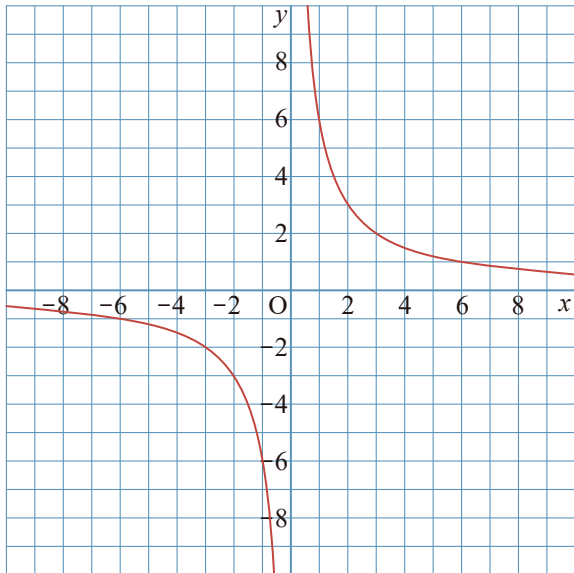


② $y = -\frac{9}{x}$

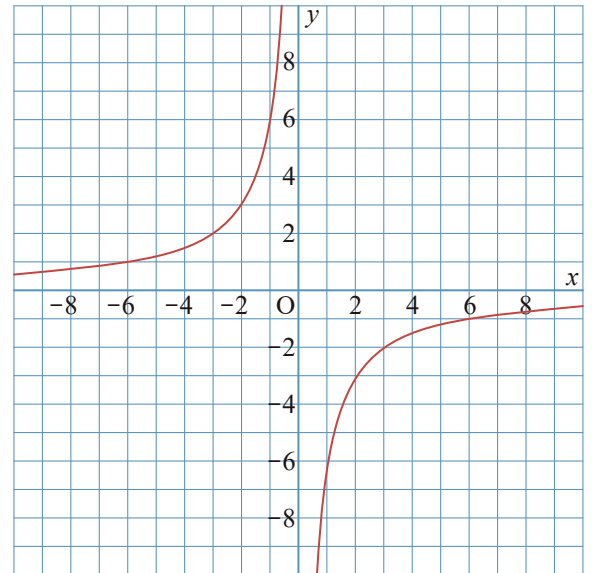


1 次のグラフをかきなさい。

① $y = \frac{6}{x}$

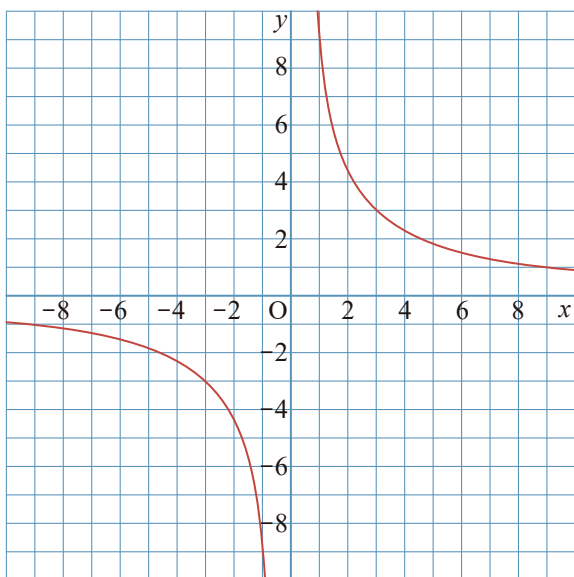


② $y = -\frac{6}{x}$



2 次のグラフをかきなさい。

① $y = \frac{9}{x}$



② $y = -\frac{9}{x}$

